

Unique ID: PA-10-01

Specimen Type: Extract

Date Received: 2/3/16

Lab ID: EXT16-0064

Client: TOK

Date of Report: 2/5/16

Analysis Summary:

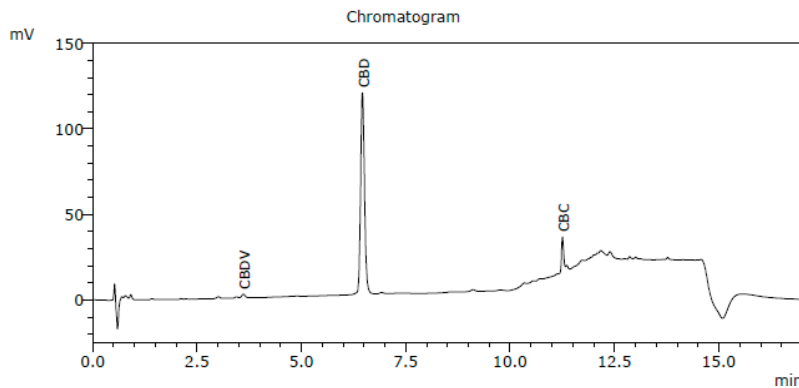


Total Cannabinoid Content	23.37%
Δ9-THC Potency	0.00%
CBD Potency	22.20%
Microbial Contamination	Within Limits
Residual Solvents	Within Limits
Sum of Analyzed Terpenes	0.62%



Detailed Report:

Cannabinoid Content/Potency:



Cannabinoid	Concentration
CBDV	0.28%
CBD	22.20%
CBG	<0.1%
CBD-A	<0.1%
CBN	<0.1%
CBG-A	<0.1%
Δ9-THC	<0.1%
Δ8-THC	<0.1%
CBC	0.89%
Δ9-THC-A	<0.1%

Potency Conversion*:

$$\Delta 9\text{-THC potency} = [\Delta 9\text{-THC-A}] \times 0.877 + (\Delta 9\text{-THC}) = 0.00\% \times 0.877 + 0.00\% = 0.00\%$$

$$\text{CBD potency} = [\text{CBD-A}] \times 0.877 + [\text{CBD}] = 0.00\% \times 0.877 + 22.20\% = 22.20\%$$

* Gieringer, D and Hazenkamp, A. 2011, Autumn. How accurate is potency testing? O'Shaughnessy's, 17-18.